



For orientation see Site Plan

### GENERAL NOTES

THIS DRAWING TO BE READ IN CONJUNCTION WITH ARCHITECT'S DRAWINGS, CONSULTANT ENGINEER'S DRAWINGS AND SPECIFICATIONS & LANDSCAPE ARCHITECT'S DRAWINGS REFER TO ARCHITECT'S SITE PLAN PL02 FOR NORTH ORIENTATION.

LEVELS GIVEN ON HOUSE TYPE DRAWINGS ARE GIVEN TO A LOCAL ABSOLUTE ZERO LEVEL. FOR SPECIFIC LEVELS DEPENDING ON INDIVIDUAL UNIT LOCATION, REFER TO ARCHITECT'S CONTEXT SECTIONS AND ENGINEER'S DRAWINGS WHERE LEVELS ARE ALL GIVEN IN RELATION TO LAND SURVEYOR'S BENCHMARK BASED ON MALIN HEAD DATUM LEVEL.

#### NOTES ON FINISHES:

ROOF: TO BE FINISHED IN METAL UPSTAND OR SIMILAR APPROVED.

WALLS: SELECTED CLAY BRICKWORK WHERE INDICATED OTHERWISE PAINTED SAND / CEMENT RENDER OR SELF COLOURED RENDER. EXPRESSED BANDS AROUND EXTERNAL OPES/ EXPRESSED LINTOLS OVER EXTERNAL OPES WHERE INDICATED TO BE RECONSTITUTED STONE (LIGHT CREAM LIMESTONE OR GRANITE EFFECT)

JOINERY: ALL WINDOWS AND DOORS, FRAMES AND LEAVES, TO BE ALUMINIUM POWDER-COATED TO APPROVED COLOUR OR UPVC OR PAINTED TIMBER TO APPROVED COLOUR. OBSCURE GLAZING WHERE INDICATED TO SENSITIVE WINDOWS.

RAINWATER GOODS: GUTTERS, DOWNPIPES, AND FIXINGS TO BE UPVC OR ALUMINIUM POWDER COATED TO SELECTED COLOUR TO MATCH ROOF SLATES

★ SOLAR PANELS: INDICATIVE SOLAR PANEL POSITION. FINAL SOLAR PANEL POSITION DEPENDS ON HOUSE ORIENTATION. THE SOLAR PANELS SHOWN ARE A PROVISIONAL OPTION TO SATISFY RENEWABLE ENERGY REQUIREMENTS OF BUILDING REGS PART L. SOLAR PANELS MAY BE OMITTED IN FAVOUR OF ALTERNATIVE RENEWABLE ENERGY SOURCE.

**CHILDCARE FACILITY- BASIS FOR DESIGN**  
 366 proposed units  
 Based on 20 spaces for every 150 dwellings as per Clane LAP.  
 49 childcare spaces are required

Breakdown of Childcare Spaces into Age Groups as per document:  
 Childcare Facilities  
 Guidelines for Planning Authorities 2001

Age Group 0-1- 3.70m<sup>2</sup> required per child  
 Area: 52m<sup>2</sup> Provided  
 14 no. Children

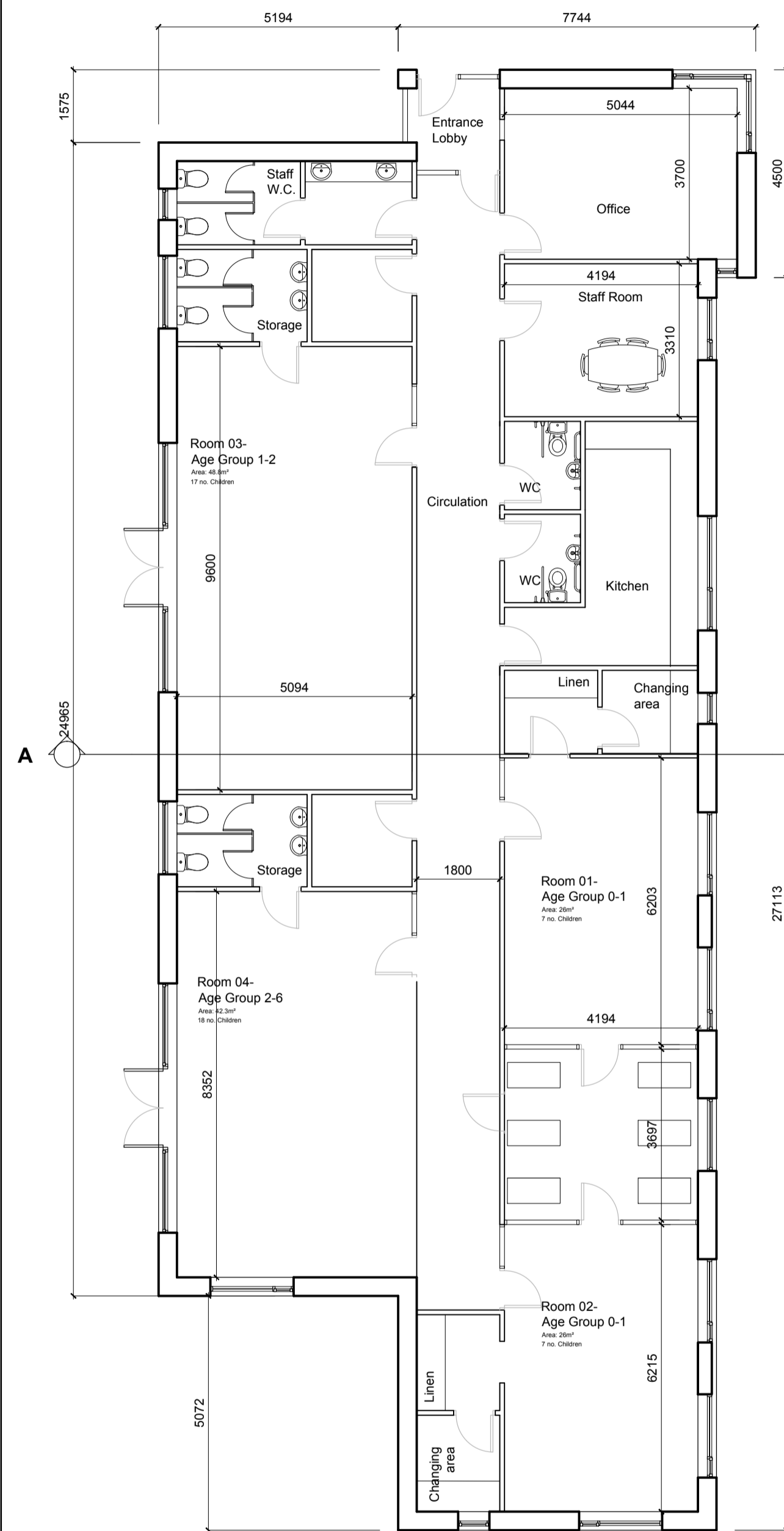
Age Group 1-2- 2.80m<sup>2</sup> required per child  
 Area: 48.8m<sup>2</sup> Provided  
 17 no. Children

Age Group 2-6- 2.32m<sup>2</sup> required per child  
 Area: 42.3m<sup>2</sup> Provided  
 18 no. Children

Car parking standards Table 17.9  
 Kildare County Development Plan 2017-2023  
 Childcare facilities

0.5 per staff member plus 1 per 4 children

Assume 10 Staff	x 0.5	5 spaces
49 Children /4		12.25 spaces
<b>Total</b>		<b>17 spaces</b>



**PLAN OF SINGLE STOREY CRECHE**  
Floor Area 316m<sup>2</sup>/ 3401ft<sup>2</sup>



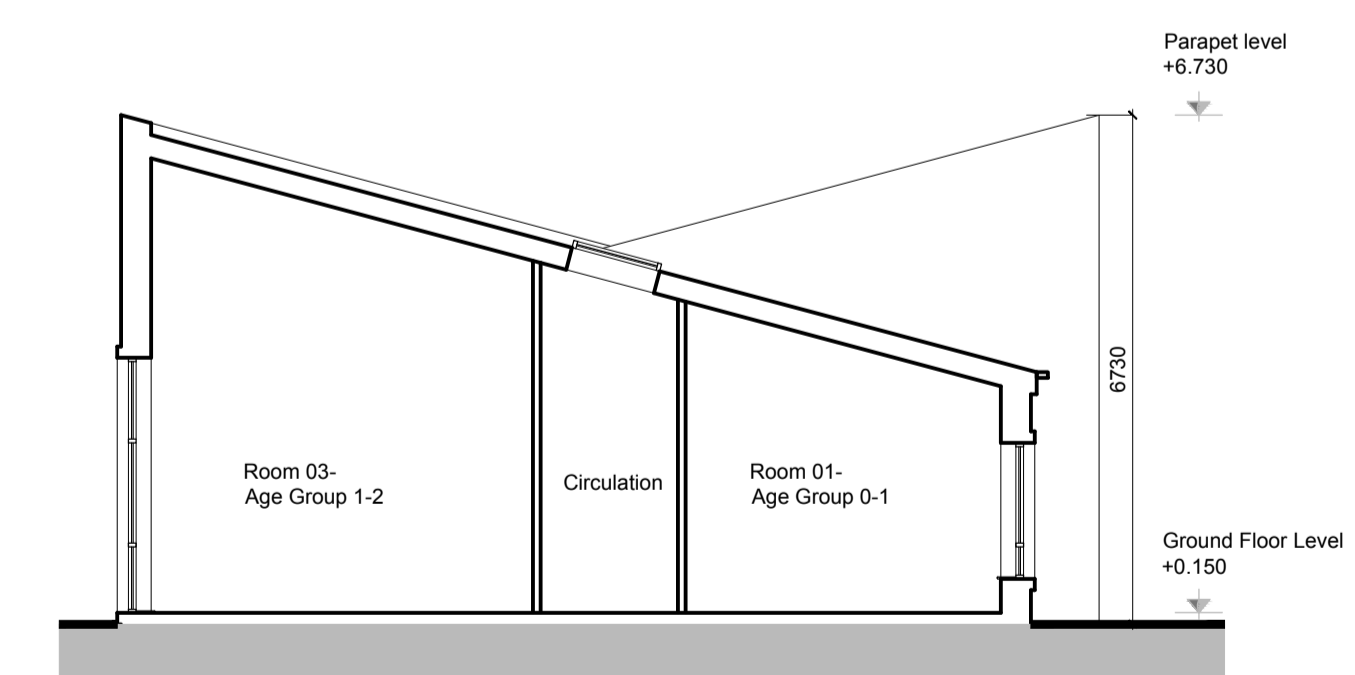
**WEST ELEVATION**



**SOUTH ELEVATION**



**NORTH ELEVATION (Entrance)**



**CROSS SECTION A-A**

### KEY PLAN



### NOTES:

DO NOT SCALE FROM DRAWINGS. WORK TO FIGURED DIMENSIONS ONLY. ARCHITECT TO BE NOTIFIED OF ALL DISCREPANCIES.

REVISIONS		
DATE	DESCRIPTION	No.

	PROJECT TITLE:	DATE:	DRAWN BY:
	Capdoo, Clane,	July '18	POR
	DRAWING TITLE:	SCALE:	REVISION:
	Creche Plan, Elevations, Section	1:100	-
JOB NO:	DRAWING NO:		
16016	PL67		

Albert Plaza West, Harcourt Lane, Dublin 2, Ireland  
 Tel: 01-4789700 Fax: 01-4789711 E-Mail: info@mccorm.com